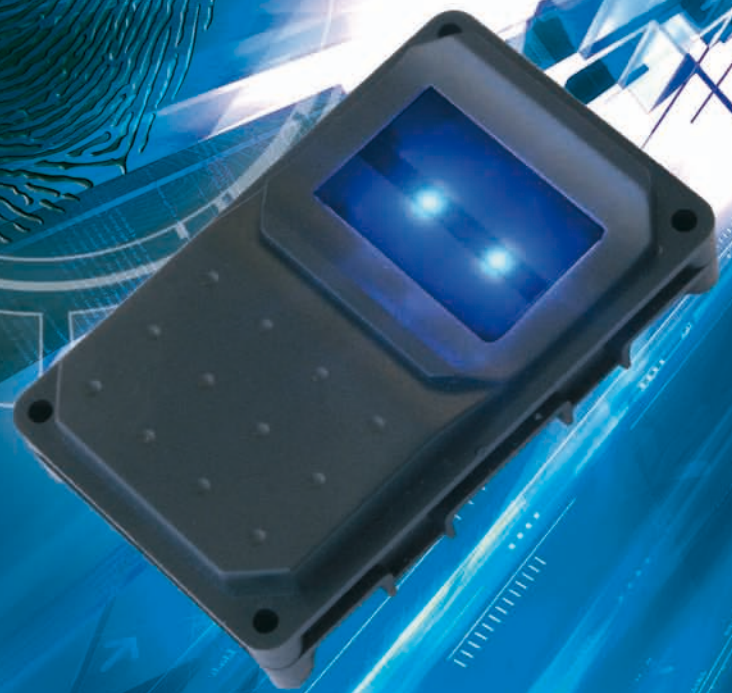


MORPHOSMART™ CBM-E

OEM ENHANCED FINGERPRINT MODULE



FBI PIV IQS certified

Quick integration of biometric functions

High quality optical sensor

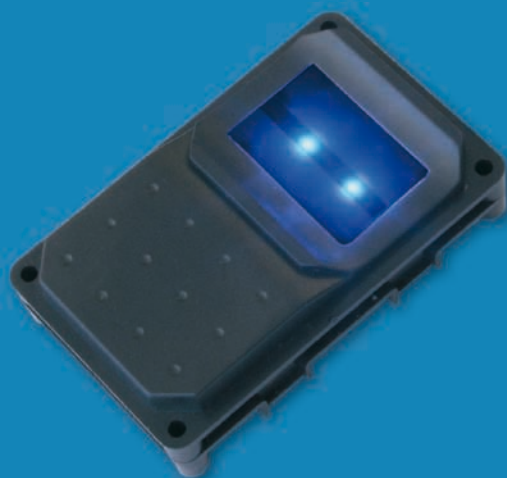
Excellent Identification performance

Large database capacity

FIPS 201 approved template generator & matcher

MORPHOSMART™ CBM-E

OEM ENHANCED FINGERPRINT MODULE



Choose leading edge technology from the world leader in biometrics

The MorphoSmart™ CBM-E compact biometric device offers **high quality images** and features **FIPS 201** approved biometric algorithms, which are known worldwide for their levels of accuracy and performance, as well as their exceptional robustness. Whether used for off-the-shelf or custom-made applications, the MorphoSmart™ CBM-E offers a flexible, cost-effective solution for the fast and secure processing of high quality fingerprint images.

Smart and innovative applications with CBM-E

With the MorphoSmart™ CBM-E, you can offer rapidly and without specific knowledge of biometrics, the benefits of fingerprint identification to applications requiring compliance with the US government's Federal Information Processing Standard 201 — **FIPS 201**.

A world of advantages in a compact design

- **Fast 1:1 authentication (0.9 sec) and 1:N identification (1 sec for 500 users)**
- **Large database up to 10,000 templates**
- **Choice of template format:**
Morpho proprietary ISO 19794-2 or ANSI/INCITS 378
- **FBI PIV IQS certified**
- **Accurate**
The false acceptance rate (FAR) can be adjusted down to 10^{-8} depending on the required level of security.
High accuracy when processing **juvenile fingers**
- **Large capture area 14x22mm**
High-performance optical sensor (500 dpi)

- **Robust**
The optical sensor technology offers **longer life-time** and **enhanced resistance to electro-static discharges**, scratches and shocks. With the entire module sealed from dust and water, it can be easily integrated into **IP 65-rated** end products.
- **Easy integration into existing systems**
USB or Serial TTL Open-Collector
- **Versatile**, same device for enrollment and identification
- **Enhanced security features**
Two different security operating modes: data integrity check by the host – by way of a digital signature – or encrypted data exchange – using secure tunneling.
- **Software package available**
The MorphoSmart™ SDK allows the development of applications thanks to DLL available on Windows® platforms, and uses the embedded algorithms of MorphoSmart™ CBM-E.
Development on Linux platforms available upon request.
ILV protocol also available.
- **Compliant with CE, FCC, UL and RoHS standards**

	CBM-E	CBM-E Identlite	CBM-E Identplus
Verification	Yes	Yes	Yes
Identification 1:N	Yes	Yes	Yes
Number of users	500	3,000	5,000
Record capacity (templates)	1,000	6,000	10,000

Morpho

Phone: +33 (0)1 58 11 73 42 - Fax: 33 (0)1 58 11 89 93 - www.morpho.com - www.biometric-terminals.com
Registered Office : Le Ponant de Paris - 27, rue Leblanc - F-75512 PARIS CEDEX 15 - FRANCE
Société anonyme au capital de 159.876.075 euros - 440 305 282 R.C.S. PARIS